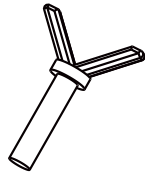
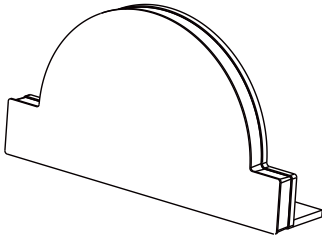


# HOW TO INSTALL TOPPER ON LEGENDS PINBALL 4KP THE ADDAMS FAMILY™

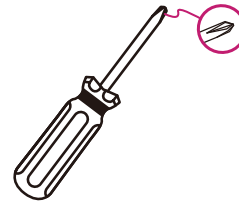
## Topper Component Parts List (included)

- Topper x1
- Wing Nut Screw x 2

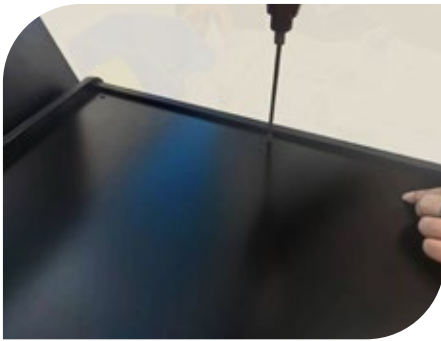


## Tools Required (not included)

- Phillips head screwdriver

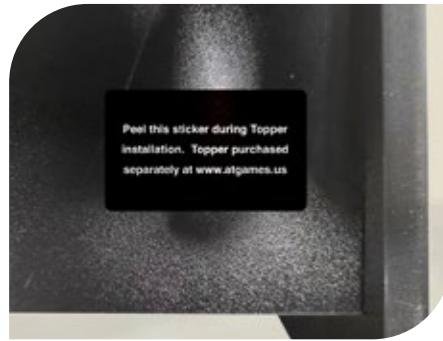


SCAN ME  
Installation Steps



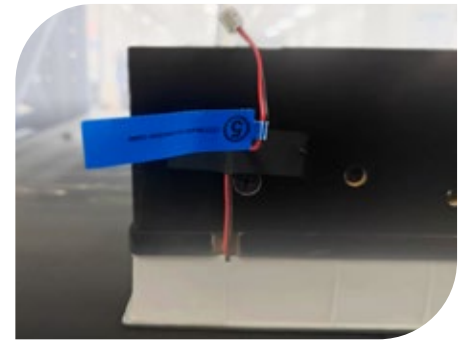
### Step 1

Remove the 8 screws from the rear panel of the backbox with a Phillips screwdriver.



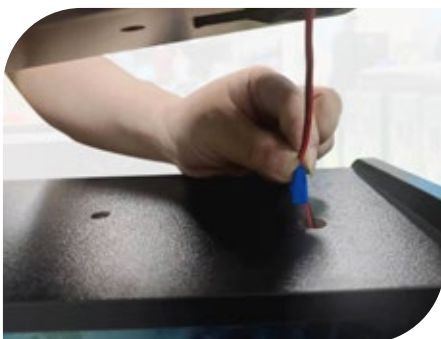
### Step 2

Peel off the sticker on the backbox.



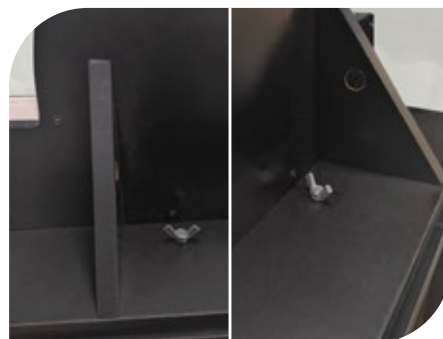
### Step 3

Unbox the Topper, remove the black wiring tape shown above.



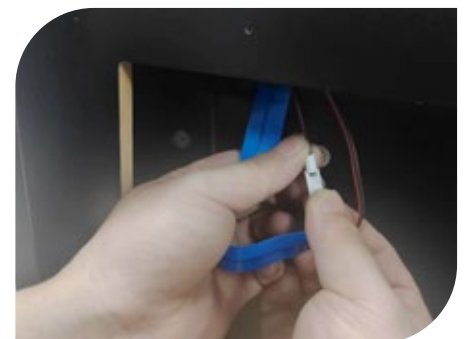
### Step 4

Roll up the blue label on the wire, and feed it through the predrilled hole on the backbox as shown above.



### Step 5

Align the topper with the corresponding predrilled holes on the top of the backbox and tighten it with the provided wing nut screws.



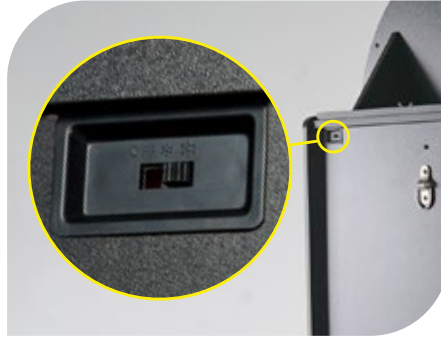
### Step 6

Connect the #5 blue labeled wire coming from the Topper, with the corresponding #5 blue labeled wire coming from the backbox.



### Step 7

Reinstall the backbox panel using the 8 screws previously removed from Step 1.



### Step 8

Locate Topper dimmer switch on backbox panel. Make sure the switch is toggled to the 'Low' or 'High' position.



### Step 9

Peel off protective film, and enjoy your new Topper!

## Safety Notice

- Do not submerge the device in water or expose it to extreme heat or to strong magnetic fields. Doing so may cause permanent damage to your device.
- Always use a dry towel to clean the device.
- Transformers are suitable for indoor use only. Transformers and power supplies for toys are not intended to be used as toys, and the use of these products by children shall be under the full supervision of parents.

## FCC Statement

This equipment has been tested and found to comply with the limits for a Class B digital device, pursuant to Part 15 of the FCC Rules. These limits are designed to provide reasonable protection against harmful interference in a residential installation. This equipment generates, uses and can radiate radio frequency energy and, if not installed and used in accordance with the instructions, may cause harmful interference to radio communications. However, there is no guarantee that interference will not occur in a particular installation. If this equipment does cause harmful interference to radio or television reception, which can be determined by turning the equipment off and on, the user is encouraged to try to correct the interference by one or more of the following measures:

- Reorient or relocate the receiving antenna.
- Increase the separation between the equipment and receiver.
- Connect the equipment into an outlet on a circuit different from that to which the receiver is connected.
- Consult the dealer or an experienced radio/TV technician for help.

Changes or modifications not expressly approved by the party responsible for compliance could void the user's authority to operate the equipment.

This device complies with Part 15 of the FCC Rules. Operation is subject to the following two conditions:

- (1) this device may not cause harmful interference, and
- (2) this device must accept any interference received, including interference that may cause undesired operation.

CAN ICES-3 (B)/NMB-3(B)

## Warranty Info

The manufacturer warrants this product to be free and clear of defects in the materials and workmanship, under normal residential use and conditions, for a period of ninety (90) days from the original invoice date. Shipping and handling fees are to be paid for by the customer. To make a warranty claim, please submit a service request here: <https://www.atgames.net/arcades/contact>

Standard warranty coverage for the AtGames Legends 4K SSF Kit does not apply to and is considered invalid due to misuse, improper maintenance, self-repair, tampering, or invasive hardware modifications of any kind, and damages or dysfunction caused by shipping or non-manufacturing related causes.

Note: Standard warranty services are valid with receipt from an authorized retailer. Purchases through third-party sellers and resellers do not fall under the standard warranty program. For warranty support, please contact the third-party seller or reseller where you purchased the product.

"The Addams Family" is a trademark of Tee and Charles Addams Foundation.

©2002-2024 Tee and Charles Addams Foundation.

Game Code © 2024 Zen Studios Ltd. All rights reserved.



[www.atgames.us](http://www.atgames.us)



[www.atgames.net](http://www.atgames.net)



Please find the most updated product info at [www.atgames.us](http://www.atgames.us).

For customer service, warranty info, and technical support please find us here:  
<https://www.atgames.net/arcades/contact/>



© 2024 AtGames Interactive

[www.atgames.net](http://www.atgames.net)

PO Box 1691, El Segundo, CA 90245

All rights reserved.

\*Content and images are for reference only and subject to change.  
The trademarks and images are the properties of their respective owners. © 2024 AtGames

Made in China