

ATGAMES

# LEGENDS PINBALL OWNERS GUIDE



# TABLE OF CONTENTS

1. The Legends Pinball Specs
2. Tables
3. ArcadeNET™
4. BYOG™
5. Settings
6. Appendix: Packaging / Unboxing / Assembly



## LEGENDS PINBALL FEATURES\*

### 22 Licensed Arcade Pinball Games Built-in

- Smooth 1080p/60FPS performance
- Even more games available!

### Arcade-quality Pinball Hardware

- 32 inch high-definition LCD playfield
- 15.6 inch LCD backglass
- Adjustable legs
- Stereo speakers
- Spring-loaded, precision plunger and high-performance flippers and nudge buttons
- Interchangeable control panels

### Great Pinball Gaming

- Lag-free responsiveness
- Track your high scores
- Fun screensaver options to leave your Legends Pinball in attract mode
- Parental controls
- Shared Screen Party Play™ feature, where each player can both chat and watch each other's turn in real-time!

### LEGENDS ARCADE PLATFORM\*\*

#### BYOG™ - Bring Your Own Game

- Free local streaming from your own PC and network of your digital game libraries from popular services
- Optional streaming from optimized servers through Cloud BYOG™ of your digital PC game libraries from popular services
- Plug in a USB drive to access your own games

#### APL™ (Arcade Play Link)

- Connect a variety of HDMI-, Bluetooth-, and USB-based devices and consoles
- Access even more content!

#### ArcadeNet®

- Provides the option of instant play with no long downloads of a growing selection of games for one low monthly fee
- Compete against others to top the leaderboards! With a free ArcadeNet® account, high scores in select games are automatically uploaded and ranked. Log in to check out the top 5 or top 50 in the world, or see your personal ranking
- Play against others in select games in competitive online play!

#### AtGames Leagues Leaderboards™ (ALL)

- Premier event and high score tracking destination for the Legends connected home arcade series of products
- See active and upcoming solo- and team-based game events, as well as the top rankings - and where you place - for a growing selection of legendary games

High-performance Wi-Fi, Ethernet, and Bluetooth support built right in

Live streaming through the most popular services

SDK for developers



# SPECS

## Controls & Inputs



D-Pad

Rewind/Select Button

Forward Nudge

AtGames/Menu Button

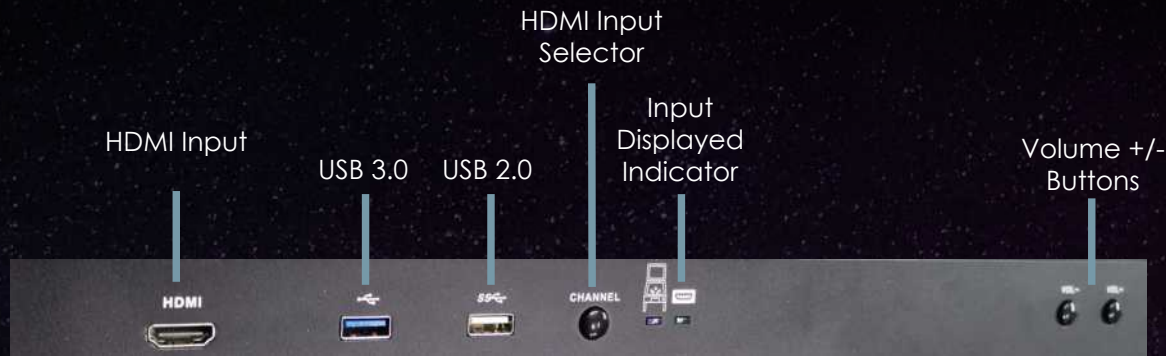
Plunger

Start Button



Nudge Button

Flipper Button



HDMI Input

USB 3.0

USB 2.0

HDMI Input Selector

Input Displayed Indicator

Volume +/- Buttons

Located on the back of unit



Power Input

Ethernet Input

## SPECS

### Access Panels



- The Access Panels are located on the backside of the machine.
- There is one panel for the main body that allows access to the main board as well as to other components.
- The second panel is located behind the backglass to allow for servicing.
- Both are lockable with an identical tubular/radial key.

# TABLES

22 FarSight games running natively (not streaming)



Zaccaria games running natively (not streaming). Will arrive later in 2021.



# TABLES

## Navigating

Select "Tables" at the top

Navigate to the table you want via D-Pad, press "Start" button to select a game.



History/description of the table.

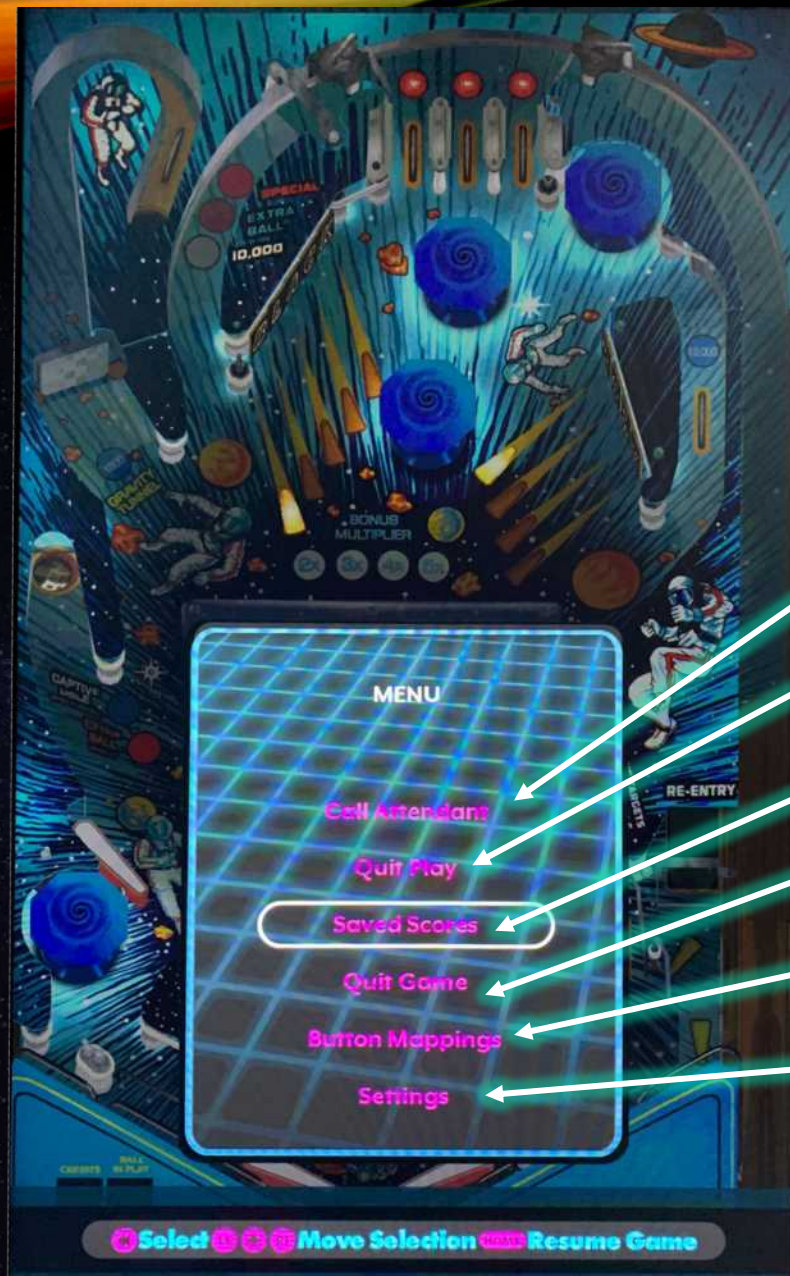
Button mapping.

QR code to Table-specific Leaderboard website.

Instructions for posting High Score.

# TABLES

## In-Game Menu



# ATGAMES

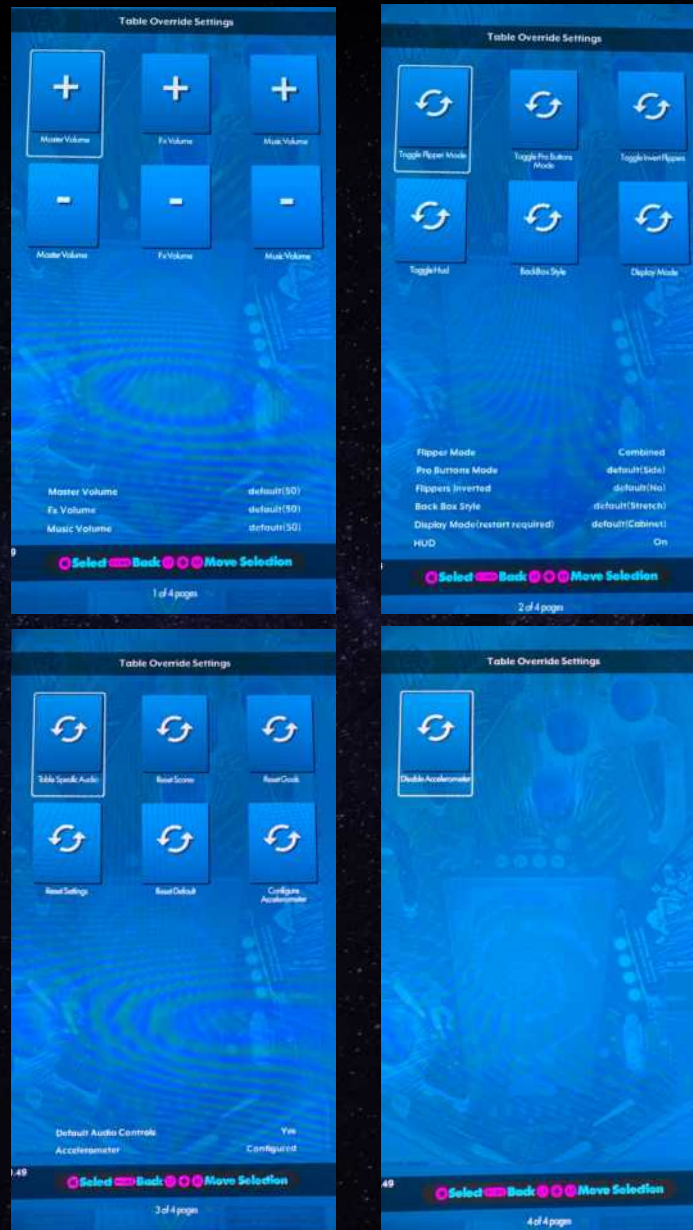
8

- The in-table settings options are accessed by pressing the “Menu/AtGames” button once the table has loaded.
- The following settings are available:
  - Call Attendant – Used when the ball is “stuck” in-game and requires a reset.
  - Quit Play – Quits playing the current table but does not exit you out of the table.
  - Saved Scores – Allows for saving scores
  - Quit Game – Completely exits you out of the table back into the Legends ecosystem.
  - Button Mapping – Allows user to change the button properties for that specific table.
  - Settings – Takes user into the In-Game Settings menu (See next slide)



# TABLES

## In-Game Settings



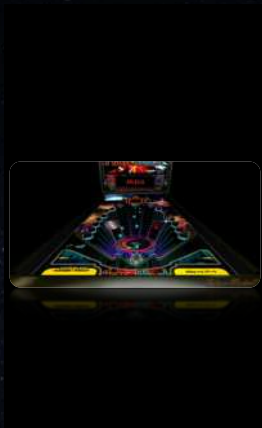
The in-table settings options are similar to all Legends products. The major difference is the inclusion of accelerometer settings. The following settings are available in-table:

- High Scores
- Leaderboards
- Table Goals
- Table Guide
- Table History
- Table Flyer
- Settings
  - Volume
  - Flippers
  - Display/Backglass
  - Accelerometer
  - Reset
- Credits

# ARCADENET™



Cloud Pinball 9 streaming games at launch (mixture of VPX and Future Pinball) with additional tables added soon.



ASTROBLAST



ASTROHITS



BIG SPENDER



COOL POSITION



DARK QUEST



FLAME REAPER 2010



FROGSTER



JUNGLE BOY



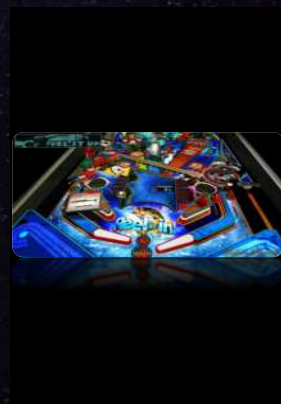
LUNCH TAKEOUT



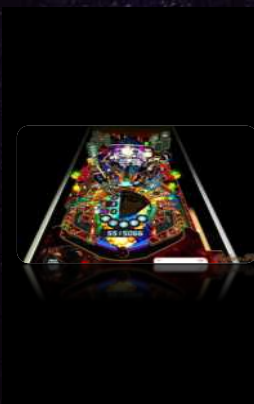
MULTIPEDE



POWERPUCK



REEL IT IN



ROBOTS INVASION



TEMPEXX



TUTANKHAM

# ARCADENET™



## Navigating

Select "ArcadeNet®" at the top

First press the "Menu/AtGames" button to bring up the side menu. Scroll down to "Cloud Pinball" and press the "Select" button. Finally, navigate to the table you want via D-pad, press "Start" button to select a game.



At launch, Cloud Pinball tables will not make use of the backlgass. Use of backlgass and full table display will occur in later firmware updates.

Steam Pinball Arcade tables will be supported through PC connection & BYOG Cloud Server. However, full backglass intergration will not be supported at launch. When supported, backglass utilization will only work if the game or app supports cabinet mode.

Select "BYOG" at the top



**BELIEVE IT OR NOT**



**FRANKENSTEIN**



**GHOSTBUSTERS**



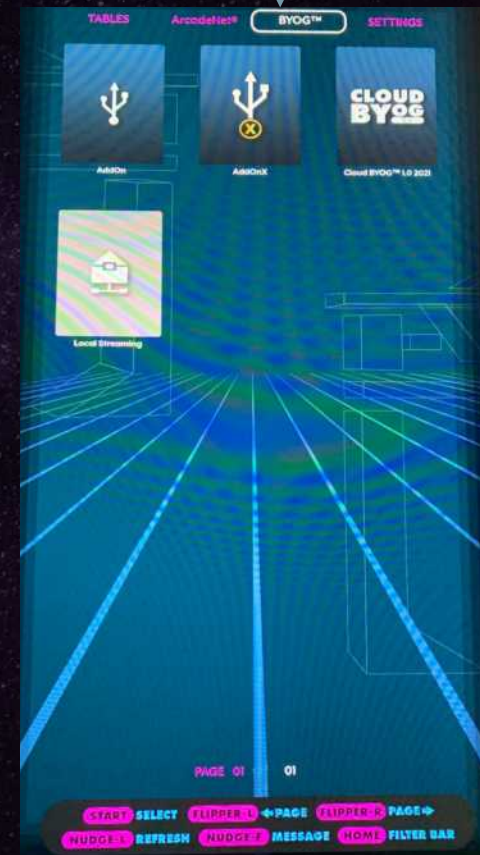
**PHANTOM OF OPERA**



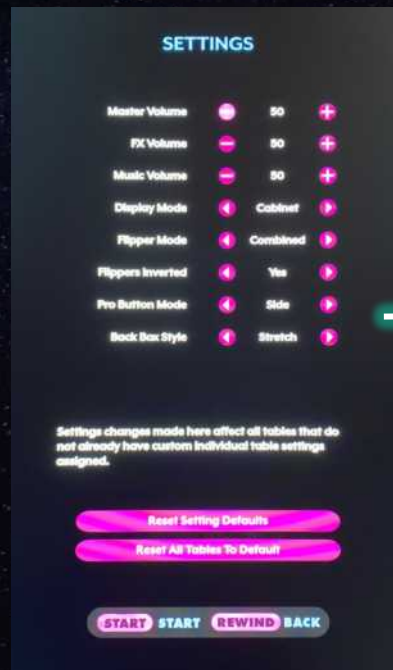
**STAR TREK**



**SUPER JACKPOT**



The standard settings you have come to know and love in the Legends Ecosystem will be present in the Legends Pinball.

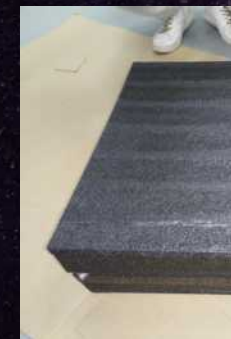


- Under “Pinball Settings”, the player can set universal settings that will affect ALL tables.
- The “HDMI Setting” file allows the player to select which display they wish to utilize when switching between HDMI inputs.

# APPENDIX: PACKAGING / UNBOXING

# ATGAMES

Ships in two boxes: Main body ~42.25 kg/93 lbs,  
backlgass 6.6 kg/14.5 lbs.



# APPENDIX: PACKAGING / UNBOXING WARNING!!!

- Please note that when assembling the machine that the top rear of the playfield has an opening for connecting the backglass.
- Because of the weight of the cabinet body, carrying the cabinet body by grabbing onto this opening can cause serious damage to both the body and electronics inside.
- Please exercise extra caution when moving the cabinet body and backglass so that you have an ideal and safe out-of-the-box experience.



# APPENDIX: EASY ASSEMBLY

**Extremely Easy to Assemble!**

**All major pieces are already preassembled!  
Only requires legs and backglass to be installed.**



Total assembly time should be approximately 15-30 minutes.



Finally, take the backglass out of the box and connect it to the main body via the 2 cables and screws provided.

**WARNING: Failure to connect cable correctly could result in damage. Ensure ends are plugged together with arrow facing arrow**

The Legends Pinball comes in two boxes. The first houses the main body and legs, the second houses the backglass. Start with the main body and assemble the legs.

Note: Due to the weight of the primary box, it is recommended that you have another person help install the legs.





THANK YOU!

