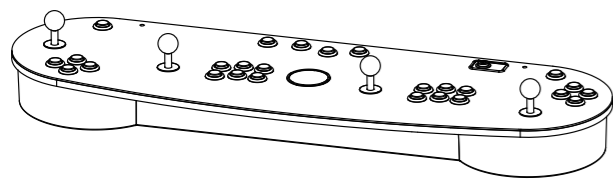


INSTRUCTION MANUAL



PARTS

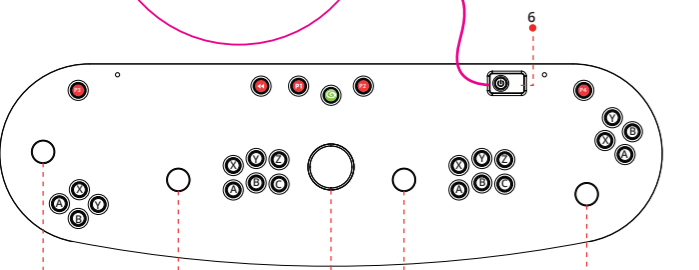
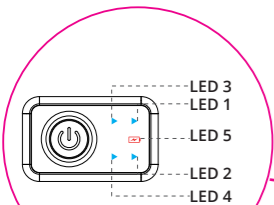


QuadPlay Control Panel with a Rechargeable Battery



USB Cable

QUADPLAY CONTROL PANEL FEATURES



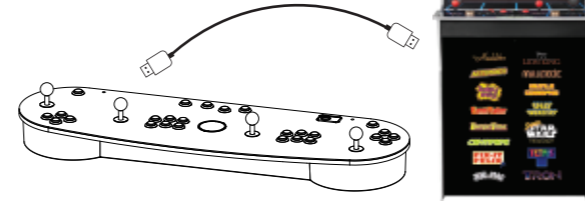
- | | | |
|------------------------------|---------------------|---------------------|
| 1. P1 JOYSTICK | ATGAMES HOME BUTTON | LED 1 (QuadPlay-P1) |
| 2. P2 JOYSTICK | P1 START | LED 2 (QuadPlay-P2) |
| 3. P3 JOYSTICK | P2 START | LED 3 (QuadPlay-P3) |
| 4. P4 JOYSTICK | P3 START | LED 4 (QuadPlay-P4) |
| 5. Trackball (not included)* | P4 START | LED 5 (Battery) |
| 6. POWER | REWIND | |

* This product has a slot for an optional Trackball (HAA310). If you want to add a trackball to your QuadPlay, it's available from the AtGames E-Store: <https://www.atgames.us/collections/accessories>

WIRED CONNECTION

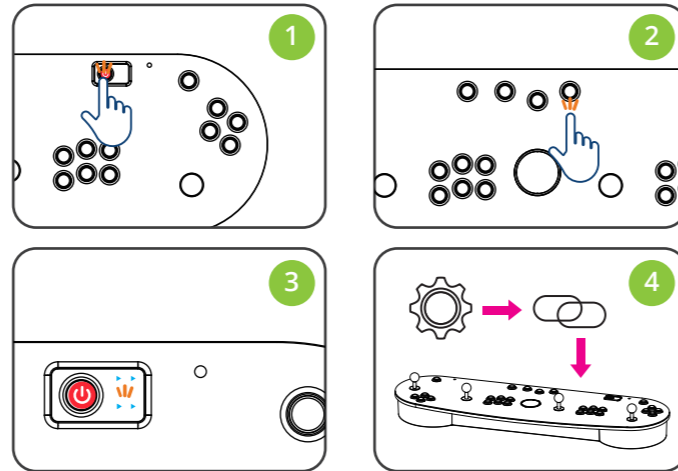
1. Power on the QuadPlay Control Panel.
2. Connect the QuadPlay Control Panel to your device via USB cable.

Connect USB to Legends Arcade Family device's USB port (Legends Ultimate shown for reference)



WIRELESS CONNECTION

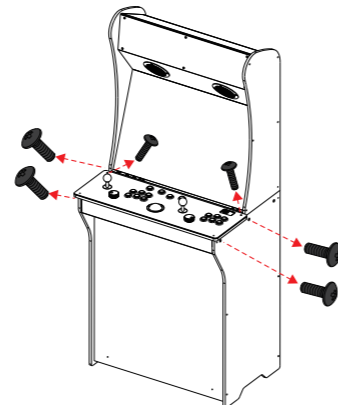
1. Power on your QuadPlay control panel.
2. Press and hold [P2] on the QuadPlay Control Panel for 5 seconds to enter its pairing mode.
3. [LED 1 - 4] will blink quickly.
4. Go to your device's Wireless Pairing settings and pair with [QuadPlay]. LED will stay lit when connection is successful.



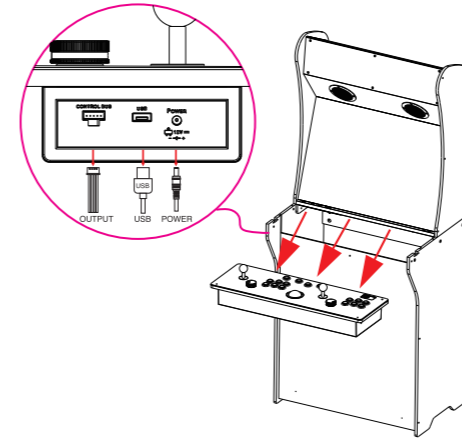
BATTERY

STATUS	LED INDICATOR
Low battery mode (with a Rechargeable Battery)	Green LED (LED 5) blinks quickly
Battery charging (with a Rechargeable Battery)	Red LED (LED 5) stays lit
Battery fully charged (with a Rechargeable Battery)	LED 5 turns off

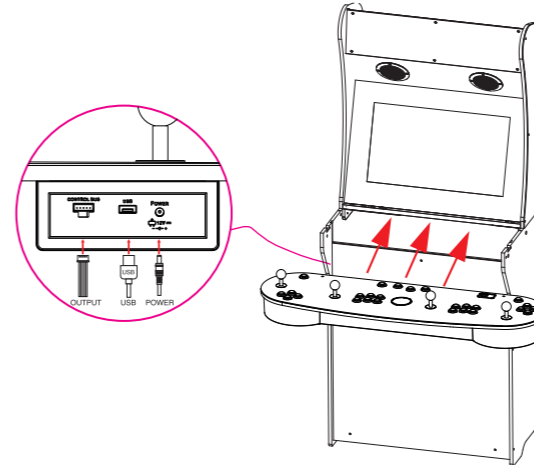
ASSEMBLY STEPS FOR LEGENDS ULTIMATE 1.1



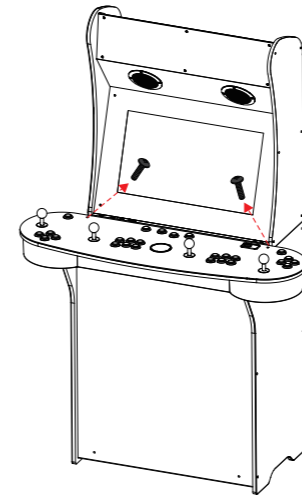
Step 1. Remove the screws from the base panel and ALU 1.1 Control Panel.



Step 2. Disconnect the cables from the matching slots on the control panel.



Step 3. Connect the cables to the matching slots on the QuadPlay Control Panel.



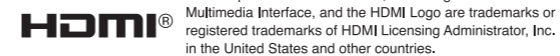
Step 4. Insert the screws to the matching holes on the QuadPlay Control Panel.

WARRANTY INFO

The manufacturer warrants this product to be free and clear of defects in the materials and workmanship, under normal residential use and conditions, for a period of ninety (90) days from the original invoice date. Shipping and handling fees are to be paid for by the customer. To make a warranty claim, please submit a service request here: <https://www.atgames.net/arcades/contact/>

Standard warranty coverage for the AtGames Legends QuadPlay Control Panel does not apply to and is considered invalid due to misuse, improper maintenance, self-repair, tampering, or invasive hardware modifications of any kind, and damages or dysfunction caused by shipping or non-manufacturing related causes.

Note: Standard warranty services are valid with receipt from an authorized retailer. Purchases through third-party sellers and resellers do not fall under the standard warranty program. For warranty support, please contact the third-party seller or reseller where you purchased the product.



The Adopted Trademarks HDMI, HDMI High Definition Multimedia Interface, and the HDMI Logo are trademarks or registered trademarks of HDMI Licensing Administrator, Inc. in the United States and other countries.

FCC STATEMENT

This equipment has been tested and found to comply with the limits for a Class B digital device, pursuant to part 15 of the FCC Rules. These limits are designed to provide reasonable protection against harmful interference in a residential installation. This equipment generates, uses and can radiate radio frequency energy and, if not installed and used in accordance with the instructions, may cause harmful interference to radio communications. However, there is no guarantee that interference will not occur in a particular installation. If this equipment does cause harmful interference to radio or television reception, which can be determined by turning the equipment off and on, the user is encouraged to try to correct the interference by one or more of the following measures:

- Reorient or relocate the receiving antenna.
- Increase the separation between the equipment and receiver.
- Connect the equipment into an outlet on a circuit different from that to which the receiver is connected.
- Consult the dealer or an experienced radio/TV technician for help.

CAUTION

Any changes or modifications to this device not explicitly approved by manufacturer could void your authority to operate this equipment. This device complies with part 15 of the FCC Rules. Operation is subject to the following two conditions:

- (1) This device may not cause harmful interference, and
- (2) this device must accept any interference received, including interference that may cause undesired operation.

FOR GAME HOST

This equipment complies with FCC radiation exposure limits set forth for an uncontrolled environment. This equipment should be installed and operated with minimum distance 20cm between the radiator and your body. This transmitter must not be co-located or operating in conjunction with any other antenna or transmitter.

BATTERY CAUTION

- This product contains non-replaceable, chargeable battery.
- There is a risk of fire and personal injury if the battery is punctured, damaged or misused.
- Do not dismantle, crush, incinerate or short circuit the battery.
- Never expose the battery to extreme temperatures or moisture.
- Keep away from flammable materials and direct sunlight.
- Only charge using the provided cable.
- Recharge using the provide cable.
- Adult supervision of the battery while it is charging is required.
- Allow the battery to cool down to the room temperature before charging.
- Charge on a non-flammable surface and keep away from flammable products.
- Discontinue charging if the battery becomes hot, swells, smokes, or gives off a strong odor.
- Battery chargers used with the product are to be regularly examined for any damage to the cord, plug, enclosure, and other parts, and in the event of such damage, they must not be until the damage has been repaired.
- Recycle or dispose of the battery according to the federal, state, and local laws.
- Keep these instructions for future reference.

ISED STATEMENT

This device complies with Industry Canada license exempt RSS standard(s). Operation is subject to the following two conditions:

- (1) This device may not cause interference, and
- (2) This device must accept any interference, including interference that may cause undesired operation of the device.

The digital apparatus complies with Canadian CAN ICES3 (B)/NMB3(B).

This device meets the exemption from the routine evaluation limits in section 2.5 of RSS 102 and compliance with RSS 102 RF exposure, users can obtain Canadian information on RF exposure and compliance. This equipment complies with Canada radiation exposure limits set forth for an uncontrolled environment. This equipment should be installed and operated with minimum distance 0mm between the radiator & your body.

SAFETY NOTICE

- Do not submerge the device in water or expose it to extreme heat or to strong magnetic fields. Doing so may cause permanent damage to your device.
- Always use a dry towel to clean the device.
- Transformers are suitable for indoor use only. Transformers and power supplies for toys are not intended to be used as toys, and the use of these products by children shall be under the full supervision of parents.



www.atgames.us



Please find the most updated product info at www.atgames.us.

For customer service, warranty info, and technical support please find us here: <https://www.atgames.net/arcades/contact>



© 2022 AtGames Interactive
www.atgames.net
 PO Box 1691, El Segundo, CA 90245
 All rights reserved.

*Content and images are for reference only and subject to change. The trademarks and images are the properties of their respective owners. © 2022 AtGames

Made in China